



QUESTIONS & ANSWERS

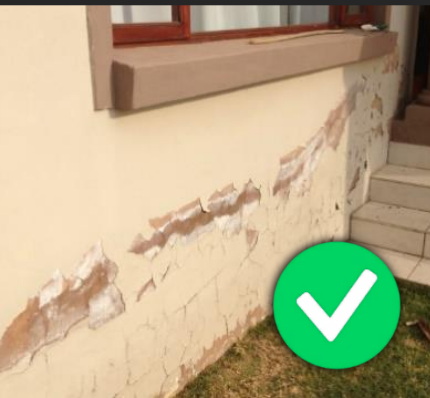


1. **I'M BUILDING A NEW HOUSE**



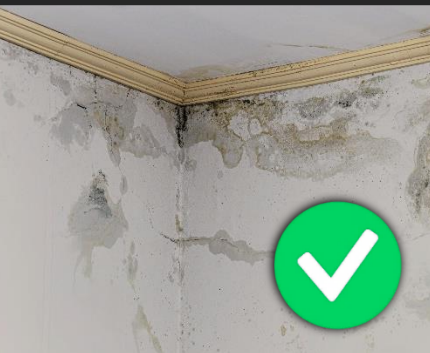
It can be highly beneficial to treat a new building with SEALIT before the application of primers and paint commences. Apply SEALIT to raw concrete surfaces to seal and protect the surface against damp, wind driven rain and hydrostatic pressures. Application method is critical to ensuring complete coverage of the surface and an effective barrier against water ingress.

2. **CAN RISING DAMP BE PREVENTED?**



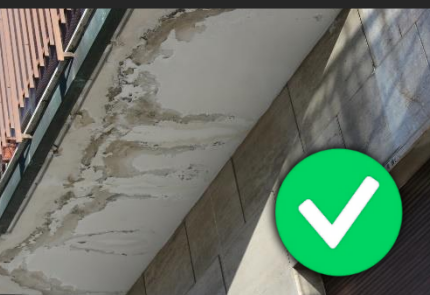
Rising damp is a common problem that occurs when moisture from the ground travels upward through porous building materials, causing unsightly damage to walls, floors and other surfaces. SEALIT is specifically designed to tackle this issue head-on. Prevent rising damp by applying SEALIT to a new building before the application of primers & paint.

3. **I HAVE A DAMP PROBLEM**



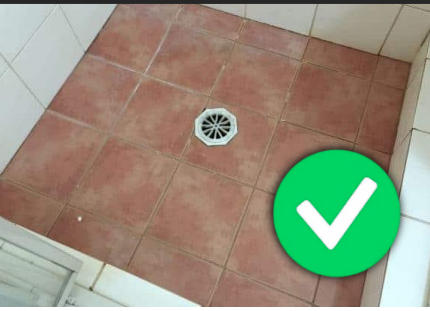
SEALIT Multipurpose is suitable for the treatment of damp. Preparation is key during this kind of project. Remove all previous sealants and paints. Ensure that the surface is clean and dry. SEALIT must penetrate into raw concrete in order to create a flexible seal.

4. **I HAVE A LEAKING BALCONY**



SEALIT Multipurpose is suitable for the treatment of a leaking balcony. Preparation before application is important. Remove tiles, paint and previous sealants. Ensure the area is clean and dry. Apply SEALIT to raw concrete.

5. I HAVE A LEAKING SHOWER



SEALIT Multipurpose is suitable for the treatment of a leaking shower. Preparation before application is important. Remove tiles, paint and previous sealants. Ensure the area is clean and dry. Apply SEALIT to raw concrete.

6. CAN I APPLY SEALIT OVER GROUT?



SEALIT Multipurpose is suitable for the treatment of grout. It is designed to penetrate porous grout. The area should be treated with a suitable algicide before application. Use a sauce bottle or similar to direct SEALIT onto the grout lines.

7. CAN I APPLY SEALIT ON TILES?



SEALIT Multipurpose is not suitable for the treatment of tiles. This sealant is designed to penetrate the concrete and block the passageway of water through fine cracks and porous sections. This is not possible on tiles.

8. CAN I APPLY SEALIT ON A FLOOR?



As SEALIT is a very soft sealer it is not suitable for use on horizontal surfaces that are subject to traffic (e.g. paths, pavers, floors etc) unless they are to be covered with tiles, carpet, or harder coatings.

9. CAN I APPLY SEALIT ON MY DRIVEWAY?



As SEALIT is a very soft sealer it is not suitable for use on horizontal surfaces that are subject to traffic (e.g. paths, pavers, floors etc).

10. **I HAVE A LEAKING ROOF**



SEALIT Multipurpose is not suitable for the treatment of roofs. This sealant is designed to penetrate the concrete and block the passageway of water through fine cracks and porous sections.

11. **I HAVE ASBESTOS SURFACES**



SEALIT Multipurpose is not suitable for the treatment of asbestos. This sealant is designed to penetrate concrete and block the passageway of water through fine cracks and porous sections.

12. **I HAVE A LEAKING SWIMMING POOL**



SEALIT Multipurpose is not suitable for swimming pools. This sealant is designed to penetrate concrete and block the passageway of water through fine cracks and porous sections. The chemicals will destroy the sealant.

13. **I HAVE A LEAKING CEMENT DAM**



SEALIT Multipurpose has been used to successfully seal leaking cement dams. SEALIT is designed to penetrate the concrete and block the passageway of water through fine cracks and porous sections. Remove all previous sealants and paints. Ensure that the surface is clean and dry. SEALIT must penetrate into raw concrete in order to create a flexible seal.

15. I HAVE A LEAKING CEMENT TROUGH



SEALIT Multipurpose has been used to successfully seal leaking cement troughs. SEALIT is designed to penetrate the concrete and block the passageway of water through fine cracks and porous sections. Remove all previous sealants and paints. Ensure that the surface is clean and dry. SEALIT must penetrate into raw concrete in order to create a flexible seal.

14. I HAVE A LEAKING KOI POND



SEALIT Multipurpose has been used to successfully seal leaking concrete koi ponds. SEALIT is designed to penetrate the concrete and block the passageway of water through fine cracks and porous sections. Remove all previous sealants and paints. Ensure that the surface is clean and dry. SEALIT must penetrate into raw concrete in order to create a flexible seal.

Take note: SEALIT may become whitish if permanently submerged. Can be overpainted with any acrylic water-based paint.

15. I HAVE A LEAKING WATER FEATURE



SEALIT Multipurpose has been used to successfully seal leaking concrete water features. SEALIT is designed to penetrate the concrete and block the passageway of water through fine cracks and porous sections. Remove all previous sealants and paints. Ensure that the surface is clean and dry. SEALIT must penetrate into raw concrete in order to create a flexible seal.

Take note: SEALIT may become whitish if permanently submerged. Can be overpainted with any acrylic water-based paint.

CONTACT US

Aqua Plastech supplies relevant high-quality water saving products and solutions to the Southern African private, retail and agricultural markets.

Our company aims to ensure that customers suffer minimal water losses especially taking into account that water is a precious resource that will become even scarcer in the future.

We offer farmers, golf courses, game lodges, fish farmers, dam and pond owners' unique innovations to seal leaks and cracks in earth dams, cement dams or various substrates.

Aqua Plastech exclusively distributes a wide range of waterproofing and sealant products manufactured by Shalex Industries in Australia. The Shalex range is either tested in the USA according to ASTM standards or the Australian Standards Bureau and have built a reputable brand globally since 1974.

Aqua Plastech (Pty) Ltd

REG NO 2016/272055/07
PHONE 086 199 5036
MOBILE 072 378 1257
EMAIL info@aquaplastech.co.za
WEB www.aquaplastech.co.za/sealite
PHYSICAL ADDRESS Unit 3 Workspectrum Park
16 Enterprise Way
Rivergate Industrial Park
Cape Farms
Cape Town
7441

DEVELOPED & MANUFACTURED BY:



AFRICAN DISTRIBUTOR:



PRODUCT:



COUNTRY OF ORIGIN:





DISCLAIMER

Customers are advised to consider the information in this Product Guide in the context of how the product will be used, including surfaces and any other products used. The information provided in this guide represents our best scientific and practical knowledge. Any advice, information or assistance provided by Shalex and Aqua Plastech (Pty) Ltd in relation to its products is given in good faith, however, is provided without liability or responsibility. Due to the wide variety of site conditions, we are unable to assume liability for any loss that may arise from the use of our products. The user is responsible for checking the suitability of products for their intended use.